

OptoOPCServer

Features

- ▶ OPC-DA 2.0-compliant
- ▶ Monitors, configures, and controls SNAP PAC controllers and brains as well as Opto 22 legacy devices
- ▶ Provides fast, efficient handling of communications between multiple OPC clients and Opto 22 devices

Description

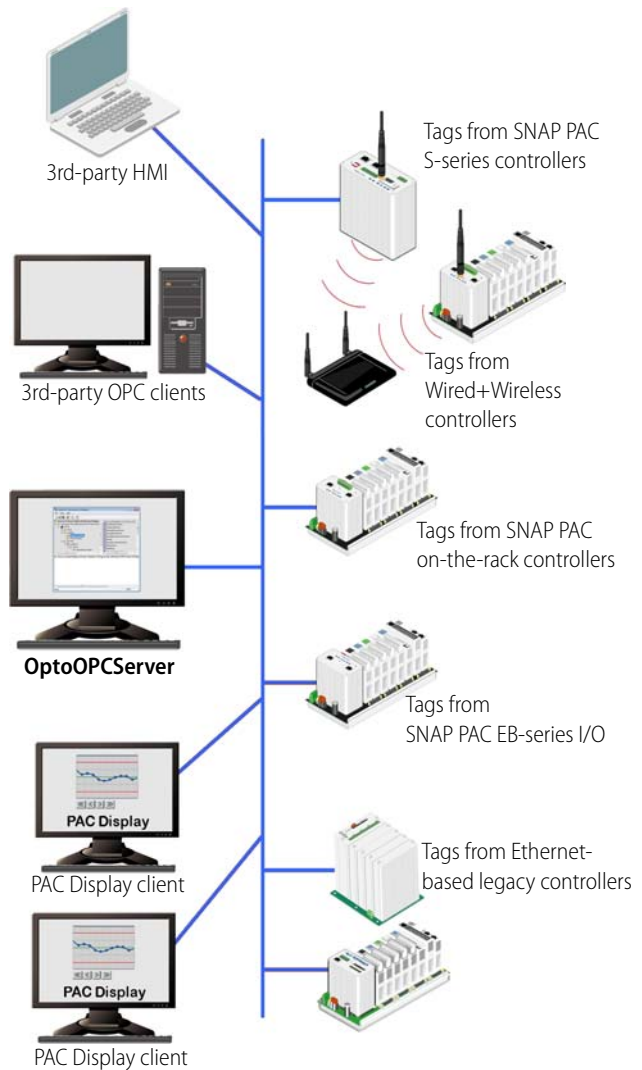
OptoOPCServer™, part of the PAC Project™ software suite, is an OPC-DA 2.0-compliant server that connects your OPC client software with Opto 22's SNAP PAC System and legacy controllers and I/O units. Through OptoOPCServer, your HMI and SCADA applications can monitor, configure, and control these Opto 22 systems:

- SNAP PAC S-series standalone controllers*
- SNAP PAC R-series on-the-rack controllers*
- SNAP PAC EB-series brains*
- SNAP PAC SB-series brains connected to SNAP PAC S-series controllers
- Ethernet-based legacy controllers and I/O units, such as the SNAP-LCE and SNAP Ultimate, SNAP Ethernet, and SNAP Simple I/O, as well as Ethernet-based FactoryFloor™ *mistic* controllers, such as the SNAP-LCM4, M4, M4RTU, and M4IO (M4SENET-100 Ethernet adapter card required).

* Includes Wired+Wireless™ models

OptoOPCServer is designed for fast, efficient handling of communications between multiple OPC clients and Opto 22 devices. Because OptoOPCServer uses a report-by-exception method of communicating with clients, network traffic on industrial automation and manufacturing networks is kept to a minimum. On the client side, OptoOPCServer consolidates tasks from multiple OPC clients, recognizing identical requests and avoiding duplication.

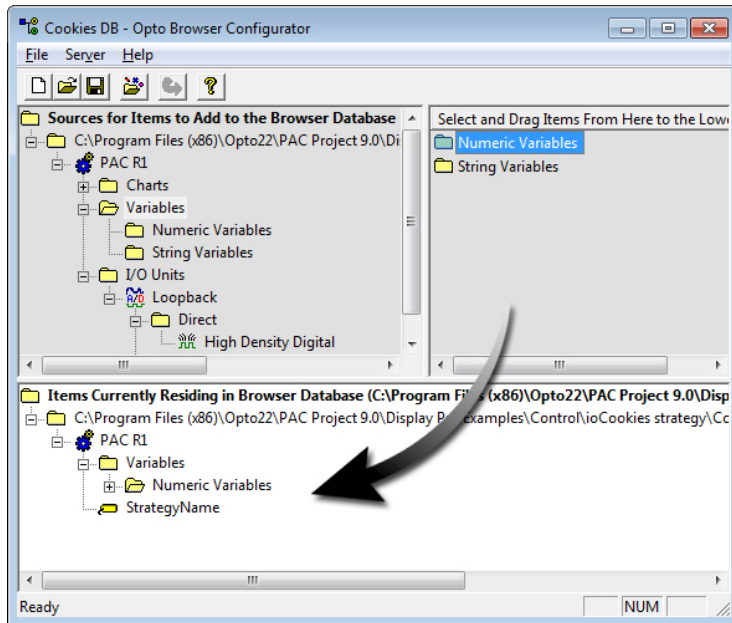
OptoOPCServer is strongly recommended for multiple seats of PAC Display. It is the critical component for scaling up a PAC Display™ monitoring system for optimum performance.



System Architecture

Part Numbers

Part	Description
OPTOOPCSERVER	OptoOPCServer software and documentation on CD, plus printed documentation



Opto Browser Configurator provides an intuitive drag-and-drop interface for building OPC browser databases from Opto 22 control and configuration files.

OptoOPCServer includes these software components:

- Opto Browser Configurator, an easy-to-use application that creates an OPC browser database from Opto 22 PAC Control strategies, ioControl and OptoControl strategies, and I/O unit configuration files
- OptoOPCServer, which runs on a workstation or dedicated network server
- OptoOPCServer debug monitor, for viewing the activity between OPC clients, OptoOPCServer, and Opto 22 devices.

NOTE: PAC Project will not install on Windows XP or older Windows operating systems. Embedded operating systems are not tested or supported.

- Ethernet capability.
- VGA or higher resolution monitor (Super VGA recommended). Minimum size: 800x600 with small fonts.
- Mouse or other pointing device.
- (Optional) Installed Windows printer.
- If your PAC Display Pro project accesses an M4-series controller (such as a SNAP-LCM4 or M4RTU) via an Ethernet connection, controller firmware version R4.1a or newer is required. In addition, in order to access strings or string tables, controller firmware R4.1d or newer is required.
- At least 19 MB of available hard drive space.

Requirements

To use OptoOPCServer with your PC, you must have the following minimum configuration:

- A computer with a standard or mainstream core processor and (at least) the minimum memory required for your version of Microsoft Windows. (Low-end CPUs are not recommended.) Additional memory may be required for some configurations.
- One of the following operating systems:
 - Microsoft Windows 10 Professional (32-bit or 64-bit)
 - Windows 8.1 Professional (32-bit or 64-bit)
 - Windows 7 Professional (32-bit or 64-bit)
 - Windows Vista® Business (32-bit only)
 - (OptoOPCServer and OptoDataLink only) Windows Server 2012 R2 and Windows Server 2008 R2

How to Obtain OptoOPCServer

Purchase OptoOPCServer either separately or as part of the complete PAC Project Professional software suite. You can [download OptoOPCServer](http://www.opto22.com) from our website at www.opto22.com.

More About Opto 22

Products

Opto 22 develops and manufactures reliable, easy-to-use, open standards-based hardware and software products deployed worldwide.

Industrial automation, process control, building automation, industrial refrigeration, remote monitoring, data acquisition, Industrial Internet of Things (IIoT), and information technology applications all rely on Opto 22.



groov

Monitor and control your equipment from anywhere using your smartphone or tablet with groov. Build your own mobile app easily—just drag, drop, and tag. No programming or coding. Visit groov.com for more information and your free trial.

SNAP PAC System

Developer- and IIoT-ready, the SNAP PAC System connects physical assets to databases and applications using open standards. The SNAP PAC System consists of four integrated components:

- SNAP PAC controllers
- PAC Project™ Software Suite
- SNAP PAC brains
- SNAP I/O™

SNAP PAC Controllers

SNAP PAC programmable automation controllers handle a wide range of digital, analog, and serial functions for data collection, remote monitoring, process control, and discrete and hybrid manufacturing.

For IIoT applications and easier integration with company systems, standalone and rack-mounted SNAP PACs include a built-in HTTP/HTTPS server and **RESTful API** (application program interface). The REST API gives you secure, direct access to I/O and variable data using your choice of programming languages. No middleware, protocol converters, drivers, or gateways needed.

Based on open Ethernet and Internet Protocol (IP) standards, SNAP PACs make it easier to build or extend a system without the expense and limitations of proprietary networks and protocols.

PAC Project Software Suite

Opto 22's PAC Project Software Suite offers full-featured, cost-effective control programming, HMI (human machine interface), OPC server, and database connectivity software.

Control programming includes both easy-to-learn flowcharts and optional scripting. Commands are in plain English; variables and I/O point names are fully descriptive.

PAC Project Basic offers control and HMI tools and is free for download on our website, www.opto22.com. PAC Project Professional, available for separate purchase, adds one SoftPAC software-based controller, OptoOPCServer, OptoDataLink, options for controller redundancy or segmented networking, and support for legacy Opto 22 serial *mistic*™ I/O units.

SNAP PAC Brains

While SNAP PAC controllers provide central control and data distribution, SNAP PAC brains provide distributed intelligence for I/O processing and communications. Brains offer analog, digital, and serial functions, including thermocouple linearization, local PID loop control, watchdog, totalizing, and much more.

SNAP I/O

I/O provides the local connection to sensors and equipment. Opto 22 SNAP I/O offers 1 to 32 points of reliable I/O per module. Analog, digital, and serial modules are mixed on one mounting rack and controlled by a SNAP PAC brain or rack-mounted PAC.

Quality

Founded in 1974, Opto 22 has established a worldwide reputation for high-quality products. All are made in the U.S.A. at our manufacturing facility in Temecula, California.

Because we test each product twice before it leaves our factory, rather than only testing a sample of each batch, we can guarantee most solid-state relays and optically isolated I/O modules for life.

Free Product Support

Opto 22's California-based Product Support Group offers free, comprehensive technical support for Opto 22 products from engineers with decades of training and experience. Support is available in English and Spanish by phone or email, Monday–Friday, 7 a.m. to 5 p.m. PST.

Additional support is always available on our website: how-to videos, OptoKnowledgeBase, self-training guide, troubleshooting and user's guides, and OptoForums.

In addition, hands-on training is available for free at our Temecula, California headquarters, and you can [register online](#).

Purchasing Opto 22 Products

Opto 22 products are sold directly and through a worldwide network of distributors, partners, and system integrators. For more information, contact Opto 22 headquarters at 800-321-6786 (toll-free in the U.S. and Canada) or 951-695-3000, or visit our website at www.opto22.com.

{RESTful API}



www.opto22.com

www.opto22.com • Opto 22 • 43044 Business Park Drive • Temecula, CA 92590-3614 • Form 1335-160810
SALES 800-321-6786 • 951-695-3000 • FAX 951-695-3095 • sales@opto22.com • SUPPORT 800-835-6786 • 951-695-3080 • FAX 951-695-3017 • support@opto22.com

© 2013–2016 Opto 22. All rights reserved. Dimensions and specifications are subject to change. Brand or product names used herein are trademarks or registered trademarks of their respective companies or organizations.